



Ergon II Equipment Carriers



**The Equipment Carrier Choice
That's Always Right for You!**

An Equipment Carrier Menu to Best Meet Clinical Needs

See menu opposite page for equipment carrier styles and available lengths and widths.

Choose Your Carrier Design (PM, KM, XM, CM or VBM)





Ergon II equipment carrier designs include Side by Side outlets for gas and electrical services in addition to an excess cable hide-away channel.

Available in 24, 36, 48 and 56 inch overall lengths.

PM, KM, XM Series

- 3 point rail mount design protects equipment
- Center aligned shelves
- 100 lbs. per shelf
- KM 16-1/2 inch, PM 22 inch and XM 32 inch widths



CM Series

- Open carrier design
- Center aligned shelves
- 70 lbs. per shelf
- Shelves available 16-1/2, 22 and 32 inch widths



VBM Series

- Open carrier design
- Cantilevered shelves or without shelves as vertical utility system
- 70 lbs. per shelf
- Shelves available in 16-1/2, 22 and 32 inch widths

Innovating Efficient Solutions for Healthcare Since 1972



Hybrid Rooms



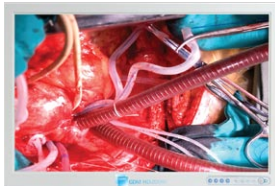
Skybooms



*Hybrid
LED Lights*



*Financing & Equipment
Acquisition*



HD Flat Panel Displays



Tables



*Fully Fiber Optic
Digital Integration*



*RTLS, RFID
Asset Manager*



Washer Disinfectors



SolidCare Cabinets



Stainless



Local Representative

5085 Corporate Exchange Blvd. SE • Grand Rapids, MI 49512
1-800-SKYTRON (759-8766) • email: sales@skytron.us

MAR-H-0004 REV0
9/10