



Stellar Lighting



**Advanced Lighting Performance
with Sterile Surgeon Focus Control**

High Intensity Lighting with Precise, Shadow Free Optics

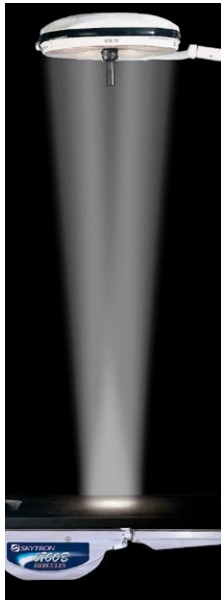
- **Brighter** - Soft white high intensity lighting at 130,000 lux (ST23) or 160,000 lux (ST29) per lighthead.
- **Direct Focus Control** - Sterile surgeon control of focus and depth of field adjustment providing maximum intensity at any distance.
- **Precise, Shadow Free Optics** - VSRD (Vertical Segmented Reflector Design) Optics provide precise, shadow free illumination at any distance.
- **Cool** - Coated reflectors direct infrared heat to the rear of the lighthead, providing an optimum balance of cool and bright light.



Stellar lighthead focused at 39" (1 meter) with a uniform 30" depth of field.



Stellar lighthead focused at 30".

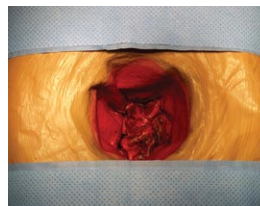


Stellar lighthead focused at 60".

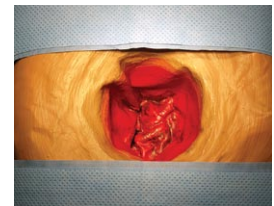
The Stellar Focusable Optics Advantage

Maximum Intensity at Any Distance

Extended working distances (beyond 1 meter) are not uncommon for many surgical procedures (Ob-Gyn, Orthopedics, Vascular and Urology). Stellar's advanced VSRD Optics optimally provide surgeons with sterile focus control. Just a ¼ turn of the sterile center focus handle captures maximum intensity at any distance without having to physically reposition lightheads.



Deep Cavity Illumination Stellar Lighthead @ 60 in. (unfocused)



Deep Cavity Illumination Stellar Lighthead @ 60 in. (focused)

Lighting Configurations

*Camera systems are available with all lighting configurations shown below



Model ST23
Single Radial Arm and Surgical Lighthead
Size: 23" (60cm) Lighthead
Intensity: 130,000 lux (12,000 fc)
(Stand Light also available)



Model ST29
Single Radial Arm and Surgical Lighthead
Size: 29" (75cm) Lighthead
Intensity: 160,000 lux (15,000 fc)



Model ST2323
Dual Radial Arms and Surgical Lightheads
Size: 23" (60cm) Lightheads
Intensity: 260,000 lux (24,000 fc)



Model ST2923
Dual Radial Arms and Surgical Lightheads
Size: 29" (75cm) and 23" (60cm) Lightheads
Intensity: 290,000 lux (27,000 fc)



Model ST232323
Triple Radial Arms and Surgical Lightheads
Size: 23" (60cm) Lightheads
Intensity: 390,000 lux (36,000 fc)



Model ST292323
Triple Radial Arms and Surgical Lightheads
Size: 29" (75cm) and 23" (60cm) Lightheads
Intensity: 420,000 lux (39,000 fc)

Innovating Efficient Solutions for Healthcare Since 1972



Hybrid Rooms



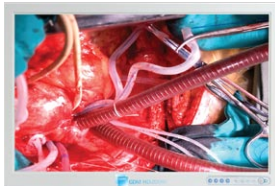
*Hybrid
LED Lights*



Tables



*Financing & Equipment
Acquisition*



HD Flat Panel Displays



Skybooms



*Fully Fiber Optic
Digital Integration*



*RTLS, RFID
Asset Manager*



Washer Disinfectors



SolidCare Cabinets



Stainless

Local Representative



5085 Corporate Exchange Blvd. SE • Grand Rapids, MI 49512
1-800-SKYTRON (759-8766) • email: sales@skytron.us

MAR-B-0014 REV0
10/10